



# State Update

## Nutrition Services Division

### California Department of Education

#### November 8, 2015

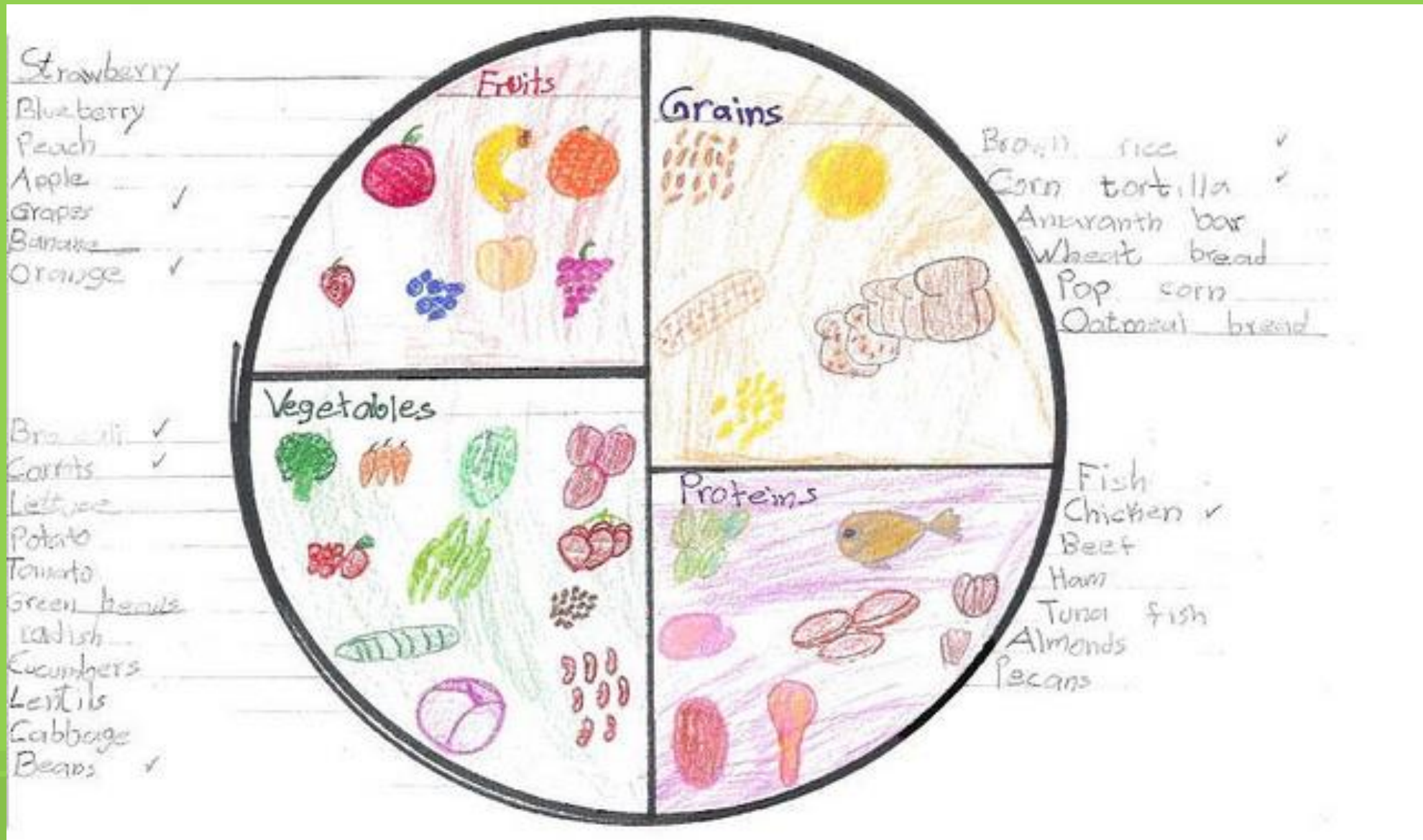




# California Department of Education Nutrition Services Division

## NSD Staff Introductions

# “My Favorite School Lunch” by Maddie G. 4<sup>th</sup> Grade





# Today's Overview

- 2014-15 Priorities and Accomplishments
- 2015-16 Priorities
- Additional Updates

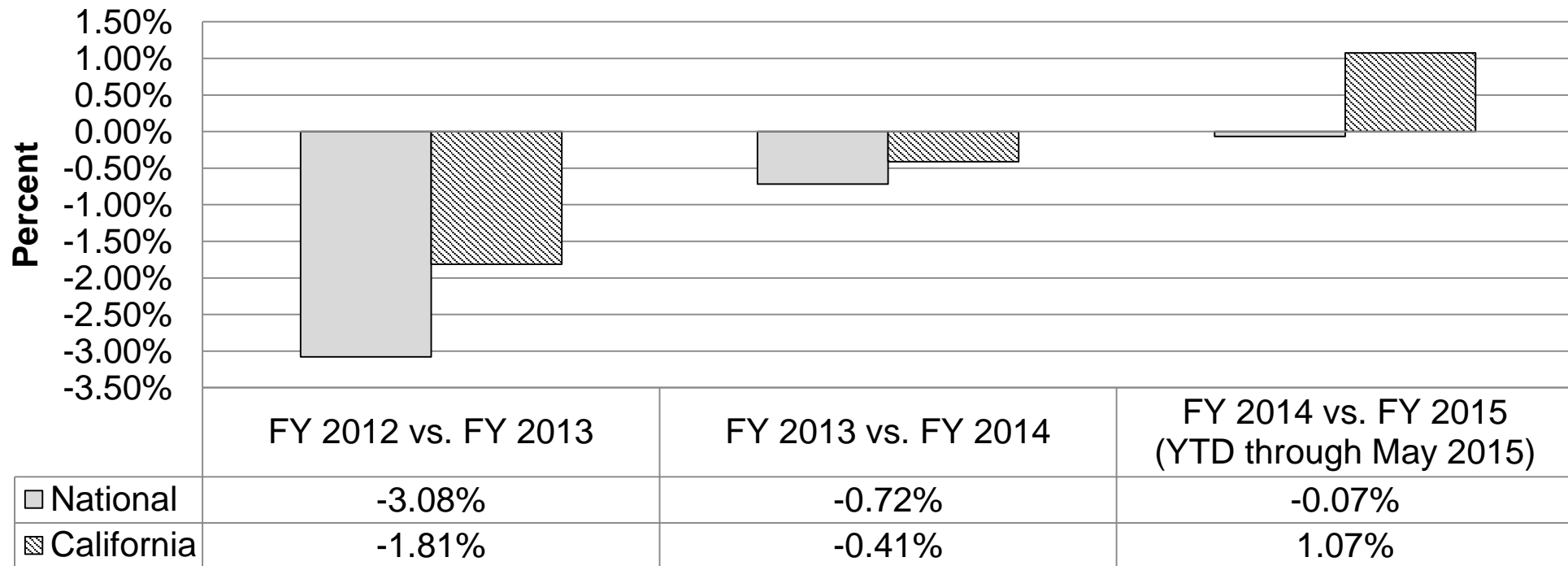


# 2014-15 Priorities and Accomplishments

- Cafeteria Fund Management
- Administrative Review Process
- Food Service Management Company: Contracts Oversight
- Continued Implementation of HHFKA
- Increase Meal Participation

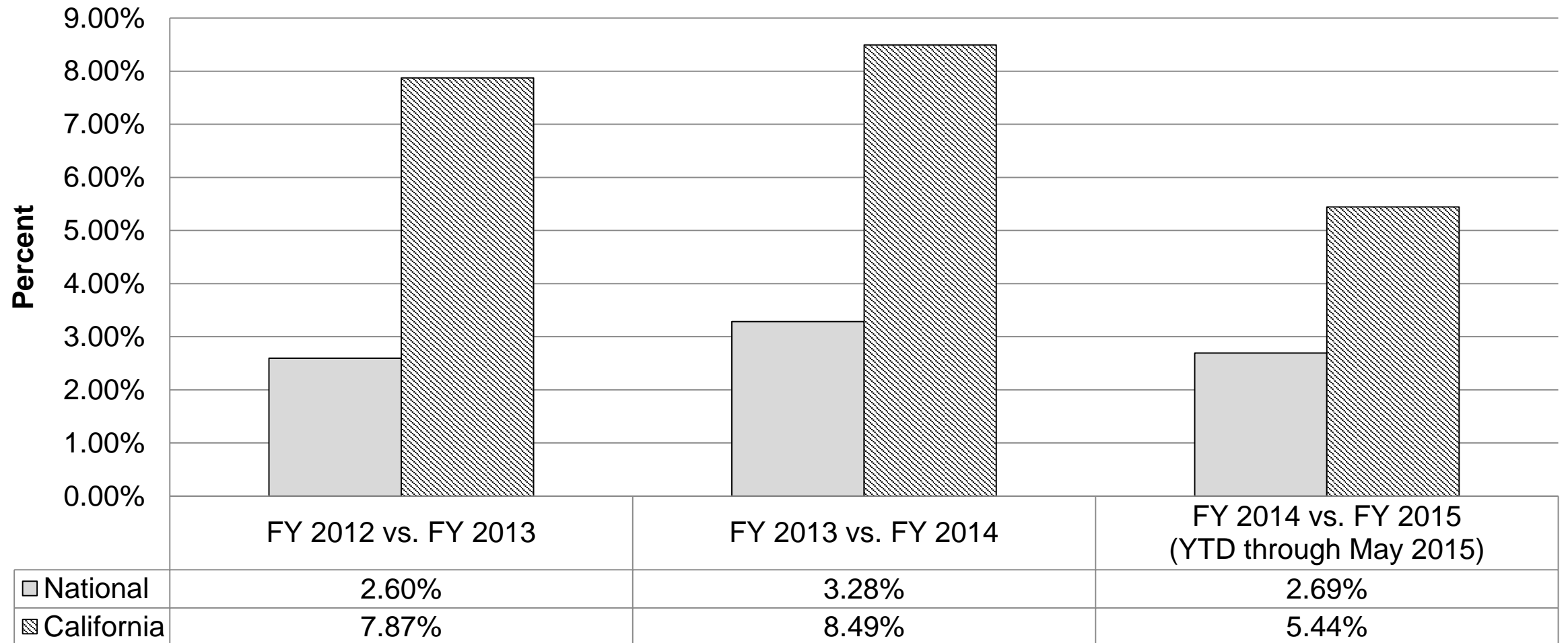
# National School Lunch Program Participation

## National School Lunch Program Average Daily Participation (ADP) National vs. California



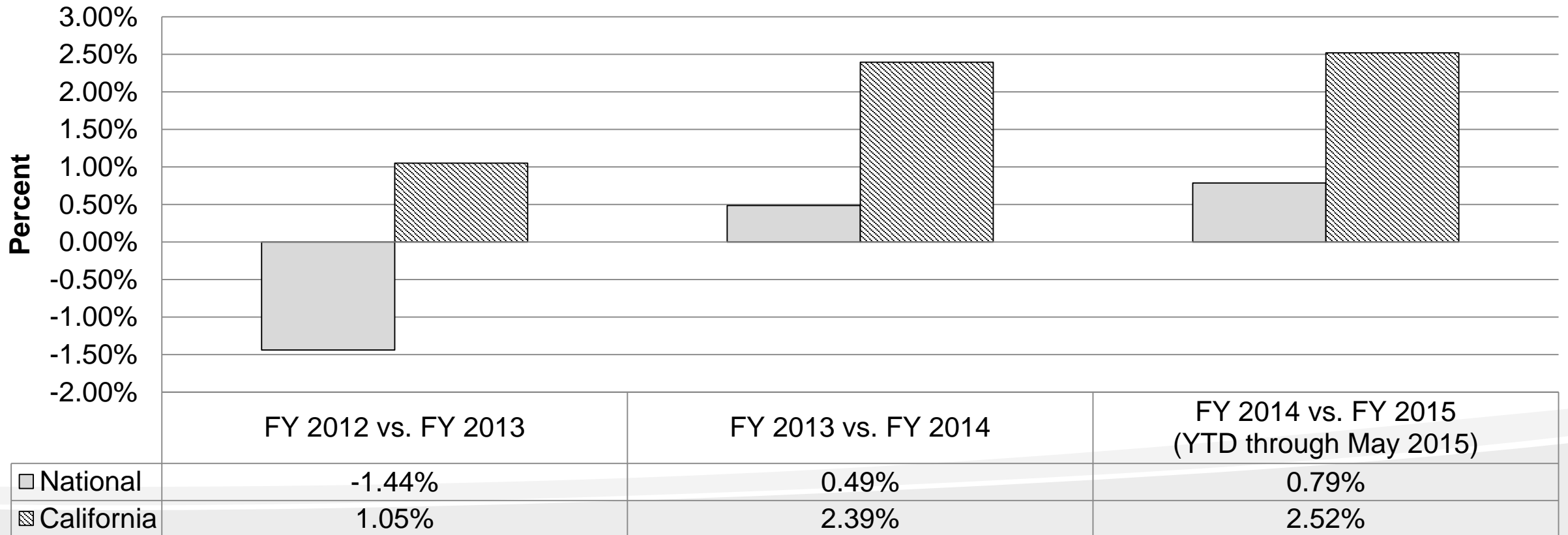
# School Breakfast Program Participation

## School Breakfast Program Average Daily Participation (ADP) National vs. California



# National School Lunch and School Breakfast Programs Participation

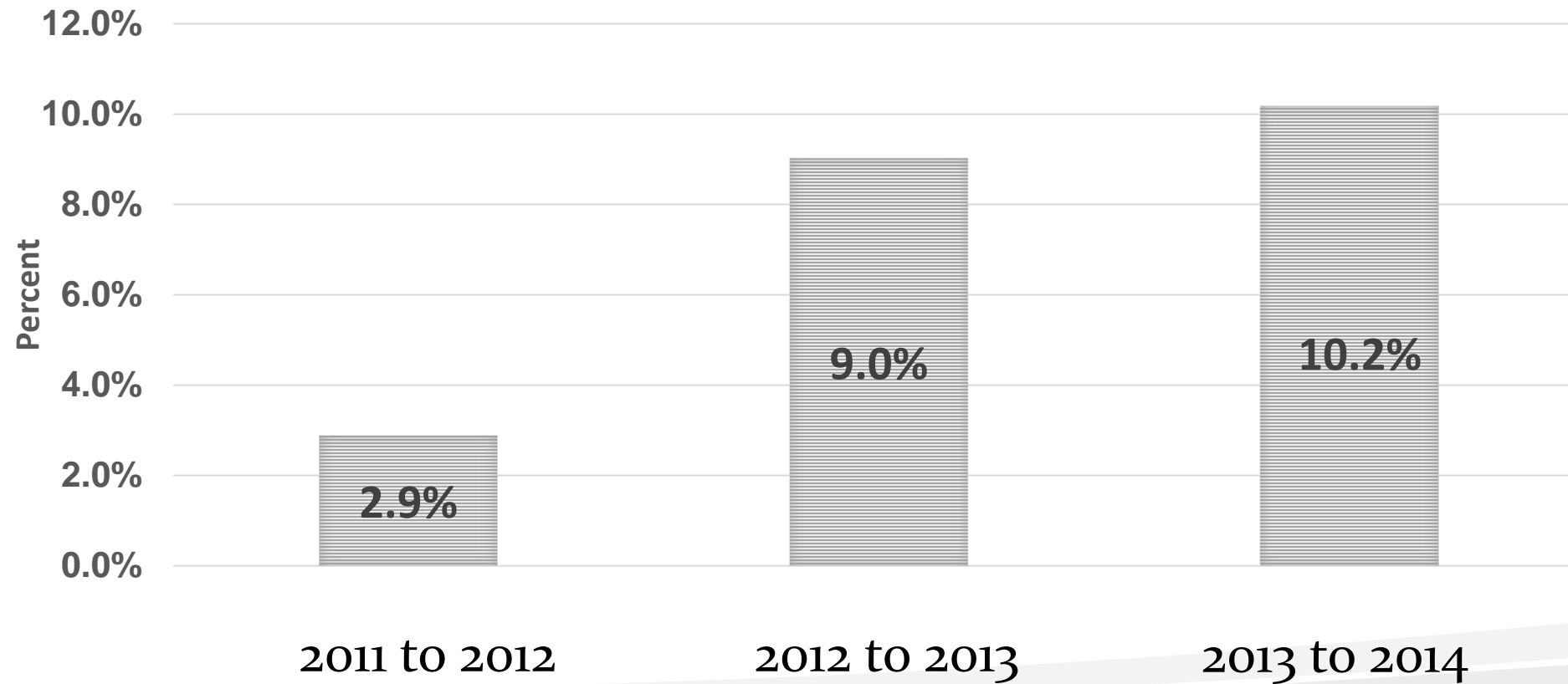
## Combined NSLP and SBP Average Daily Participation (ADP) National vs. California





# Summer Meals Continue to Rise

Summer Meal Totals June through August



# 2014-15 Additional Accomplishments

- Team California for Healthy Kids
- Let's Move Salad Bars



# SKIPPING VEGETABLES?!



4-18

© 2015 Bill Keane, Inc.  
Dist. by King Features Synd.  
www.familycircle.com

Bill  
and  
JEFF  
KEANE

**“When am I gonna be healthy enough  
to skip eatin’ vegetables?”**



# NSD's 2015-16 Priorities

- Continuing to implement the HHFKA
- Increasing meal participation across all programs
- Providing introductory training and guidance on local procurement requirements



**2015–16**

**Prereview Workshops and  
the Evolution of the  
Administrative Review  
Process**



# School Nutrition Program Administrative Review

- Provided new tools and resources:
  - Administrative Review, Offsite Assessment Tool (YouTube video)
  - AR 101 PowerPoint



# School Nutrition Program Administrative Review

- AR YouTube video:
  - Procedure on how to access the OAT in CNIPS
  - Job Aid containing resources for completing the OAT



# School Nutrition Program Administrative Review

- AR 101 PowerPoint
  - Overview of the new SNP AR process
  - Describes the 5 key sections and 24 subsections of the AR





# SNP AR Prereview Workshops

- Conducted 51 SNP AR Regional Prereview Workshops (PRW)
- 5 Residential Child Care Institution PRWs
- 3 Large agency PRWs



# Evolution of the SNP AR Process

- School Year 2015-16 is the second year NSD used CNIPS for ARs
- Collaboration with the Compliance Coordination Unit and the Resource Management Unit



# Administrative Review Waiver

- School Year 1, 2013-14
- School Year 2, 2014-15
- School Year 3, 2015-16
- School Year 4, 2016-17 (one-time waiver)



# 2015-16 Continued Implementation of the HHFKA





# Revised Meal Patterns for the Child and Adult Care Food Program



# Training, Technical Assistance, and Resources



# Professional Standards

## Final Rule

[www.regulations.gov](http://www.regulations.gov)



## U.S. Department of Agriculture (USDA) Summary Flyer

<http://professionalstandards.nal.usda.gov/content/professional-standards-information>

## USDA Frequently Asked Questions

<http://www.fns.usda.gov/school-meals/professional-standards>

# Professional Standards

- Webinar (May 2015)
- Resources (In Stepp e-mail)
- Policy Guidance (ongoing)
- New Professional Standards Web page (Fall 2015)







# Competitive Foods and Beverages

## Web Site Resources

- New look to Web site
- All Management Bulletins Updated
- Quick Reference Cards for noncharter public schools and charter/private schools



<http://www.cde.ca.gov/ls/nu/he/compfoods.asp>

# Competitive Foods and Beverages

## Web site Resources (continued)

- **Coming Soon**
  - Recorded Webcasts
  - Updated Project LEAN calculator



<http://www.cde.ca.gov/ls/nu/he/compfoods.asp>



# Local School Wellness Policies

Smarter Lunchrooms  
Movement



<http://www.cde.ca.gov/lis/nu/he/wellness.asp>

**More implementation at the school level!**

Broader  
Stakeholder  
Engagement



# Smarter Lunchrooms Movement of California (SLM of CA)

- Low-cost/no cost ways to increase student consumption of healthier foods
- SLM of CA is a statewide, collaborative effort

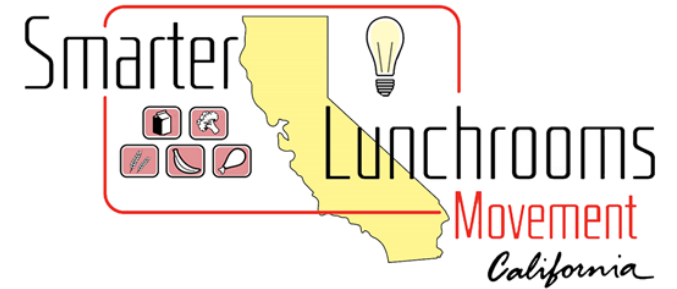


<http://www.cde.ca.gov/ls/nu/he/smarterlunchrooms.asp>



# Team Nutrition SLM Grant: “TAP into SLM”

Purpose: to implement Smarter Lunchrooms Movement strategies aligned with nutrition education



Grant period: March 1, 2016—June 20, 2016

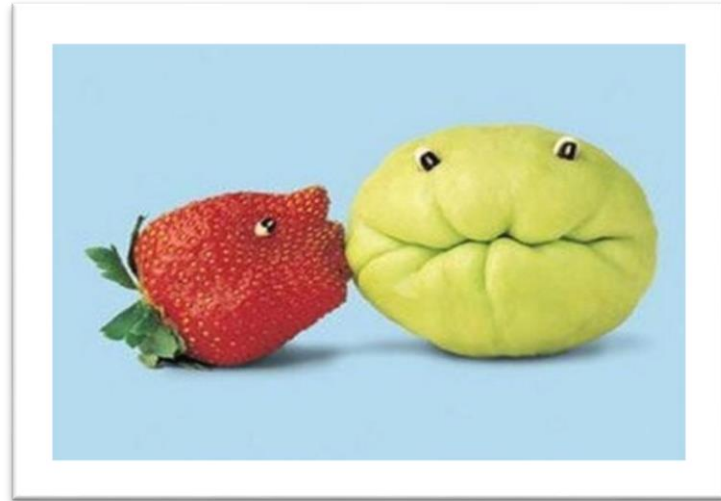
- \$13,600 per district for two school sites
- Application due December 5, 2015

<http://www.cde.ca.gov/fg/fo/af/>



# HealthierUS School Challenge (HUSSC)

- 1,102 schools are HUSSC certified
- HUSSC criteria was recently revised



<http://www.fns.usda.gov/hussc/application-materials>

<http://www.cde.ca.gov/ls/nu/he/hussc.asp>

# Fresh Fruit and Vegetable Program (FFVP)

- California received \$12.2 million for the 2015–16 FFVP grant year
  - 371 elementary schools (71 SFAs)
  - Total award = \$53.04 per student



**FRESH**  
FRUIT &  
VEGETABLE  
**PROGRAM**

# Exemption from Whole Grain-rich (WGR) Requirement

## Guidance

- USDA Memo SP 20–2015
- Management Bulletin







# Exemption from WGR Requirement

## Details of Exemption

- WGR Exemption Request form available in CNIPS

<https://www.cnips.ca.gov>

- Identify acceptable WGR products as soon as possible
- Documentation must be filed and maintained



# FRESHMeals@Schools and Team Up for School Nutrition Success

## FRESHMeals@Schools

- Ambassador Leadership Conferences
- Culinary Centers and Standardized Recipes
- Online Trainings

**Team Up for School Nutrition Success**



SANDWICHES & WRAPS

<http://www.californiahealthykids.org/freshmealsatschools>

# Farm to School



[www.cafarmtofork.com](http://www.cafarmtofork.com)

[cafarmtofork@cdfa.ca.gov](mailto:cafarmtofork@cdfa.ca.gov)

<http://blogs.usda.gov/2015/10/01/research-shows-that-farm-to-school-works>

# HIGH MARKS FOR FARM TO SCHOOL

Preliminary results from the second USDA Farm to School Census show that **75% of respondents** engaged in farm to school activities experienced at least one of these benefits:



## MORE KIDS

choosing school meals



## LESS FOOD WASTE

thanks to more delicious options



## LOWER COSTS

from buying local



## GREATER SUPPORT

from parents and communities

THE  
FARM *to* SCHOOL  
CENSUS

[farmtoschoolcensus.fns.usda.gov](https://farmtoschoolcensus.fns.usda.gov)



# Grant Opportunities

## 2015 Equipment Assistance Grant





# Grant Opportunities

(continued)

## **School Breakfast Program and Summer Food Service Program Startup and Expansion Grants (ongoing)**

- \$1.017 million annually appropriated by California's Legislature
- Up to \$15,000 per site
- Available to school districts, county offices of education, and direct-funded charter schools
- Applications available each spring; awards paid in summer or fall



# Food Distribution Program



# Changes and New USDA Foods

- Reduced Sodium
  - Beef patties and beef crumbles
  - Turkey deli items including regular and smoked turkey and turkey ham







# USDA Foods that Prohibit Allergens

- Beef Patty 90/10 (no gluten or soy)
- Chicken Fajita Strips (no gluten or soy)
- Unseasoned Chicken Strips (no gluten or soy)



# USDA Foods that Prohibit Allergens

(continued)

- Turkey Deli (no gluten or soy)
- Turkey Deli, Sliced (no gluten or soy)
- Turkey Deli, Smoked (no gluten or soy)
- Turkey Ham (no gluten or soy)
- Turkey Roast (no gluten or soy)
- Turkey Taco Filling (no gluten)



# USDA Foods Availability

- Apricots
- Avian Flu
  - Turkey Solicitations
- Tuna
- Canned Chicken
- Potato Rounds
- Greek Yogurt



# Changes and New USDA Foods

- Whole Grains
  - Flour, White Whole Wheat/Enriched 60/40 Blend
  - Penne, Whole Grain
  - Penne, Whole Grain-rich Blend
  - Rotini, Whole Grain-rich Blend
  - Spaghetti, Whole Grain-rich Blend
  - Macaroni, Whole Grain-rich Blend





# USDA Pilot Project for Procurement of Unprocessed Fruits and Vegetables School Year 2015-16

- Uses USDA Foods Entitlement Funds
- 43 Schools Participating
- USDA-approved Vendors
- Possible Pilot Expansion in December





# REMINDER!

## December 15, 2015

Deadline to change the way you order and receive  
USDA Foods for School Year 2016–17

Management Bulletin NSD-FDP-02-2013,  
Changing Receipt of USDA Foods Web page  
<http://www.cde.ca.gov/ls/nu/fd/mbnsdfdp022013.asp>

Contact: Amy Bell [abell@cde.ca.gov](mailto:abell@cde.ca.gov)



# 2015-16 Meal Participation



Chenxia / Getty Images



# 2015-16 Meal Participation

Quarterly participation data review





# Direct Certification

- CALPADS improvements
  - Foster Child match
  - Separation of CalFresh and CalWORKs data
  - Second match that removes address criteria
  - Medi-Cal match is coming soon



# Direct Certification

- Direct Certification Survey
- Continuous Improvement Plan
- Direct Certification Improvement Grant



# NSD 2015-16 Priorities: Community Eligibility Provision

- Participants: 43 LEAs: 358 schools

- Visit the CDE CEP Web page at:

<http://www.cde.ca.gov/ls/ne/sn/cep.asp>



# CEP Mid-Year Election

- LEAs may apply throughout School Year 2015-16 (CNIPS Download Forms, SNP-19)
- 2014-15: 25 districts; and 195 sites
- 2015–16: 18 districts and 163 sites
- Visit the CDE CEP Web page at <http://www.cde.ca.gov/ls/nu/sn/cep.asp>

# Local Control Funding Formula (LCFF)

- LCFF FAQs are continually updated and posted to the CDE LCFF Web page at <http://www.cde.ca.gov/fg/aa/lc/lcffffaq.asp>
- To subscribe to these updates by e-mail, send a blank e-mail message to [join-LCFF-list@mlist.cde.ca.gov](mailto:join-LCFF-list@mlist.cde.ca.gov)
- For LCFF questions e-mail [LCFF@cde.ca.gov](mailto:LCFF@cde.ca.gov)





# 2015–16 Procurement

# Procurement Training

- Phase One (July 2015-June 2016) is the baseline year for training and technical assistance
- Phase Two (July 2016-June 2017) will include more in-depth procurement training topics





# Procurement Coming Attractions



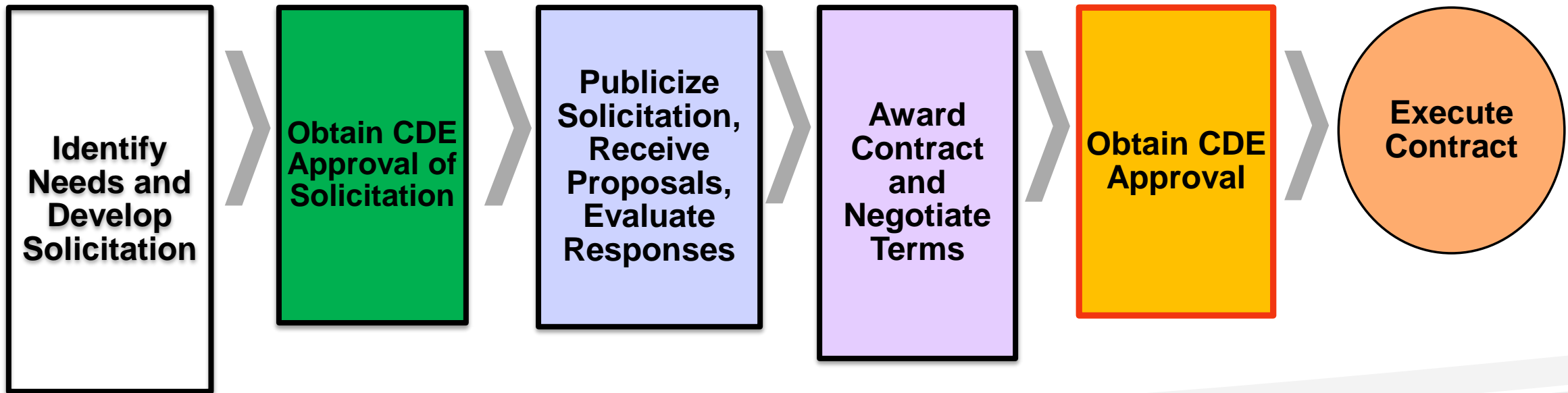




# Food Service Management Company Contracts

- Time to rebid
- NSD Review Timeline

# FSMC Contract Approval Process





# School Food Service Contracts Unit

California Department of Education

1430 N Street, Suite 4503

Sacramento, CA 95814

Phone: 916-319-0636

Fax: 916-445-5731

E-Mail: [SFSContracts@cde.ca.gov](mailto:SFSContracts@cde.ca.gov)

The Contract Specialist Caseload Assignments  
are located in the CNIPS Download Forms as  
“Caseload”



# Additional State Updates

- 2 *CFR*, Part 200
- Special Dietary Needs
- State Law Changes



## 2 *CFR*, Part 200

- Listserv sent announcing the new federal regulation that combines the following regulations:
  - OMB A-87
  - OMB A-122
  - OMB A-133
  - Title 7, *CFR*, sections 3015, 3016, and 3019
- We will be posting a side-by-side chart listing the changes from the old regulations to the new regulation

# Statements Supporting Accommodations for Children with Disabilities in the Child Nutrition Programs

## Policy Change and Guidance

- USDA Policy Memo SP 32–2015
- In addition to a Licensed Physician
  - Nurse Practitioner
  - Physician Assistant
- Management Bulletin CNP-10-2015
- CDE Medical Statement Form





# State Law Changes



# AB 402

- **AB 402 Prototype Application**
  - Incorporated parent or guardian consent
  - Translated into Spanish and Vietnamese
  - More translations available soon
- **AB 402 Outreach**
  - Survey
  - Multiagency support





# SB 708

- **What is Senate Bill 708?**

An act to amend *Education Code* Section 49557 that governs meals for needy pupils.

- **Who does SB 708 pertain to?**

Public school districts and county office of education

- **When will this new change take effect?**

January 1, 2016

- **What changes should we expect?**

Offering an online application is optional. If the public school districts and COEs make applications available online, the SFA must meet certain criteria.



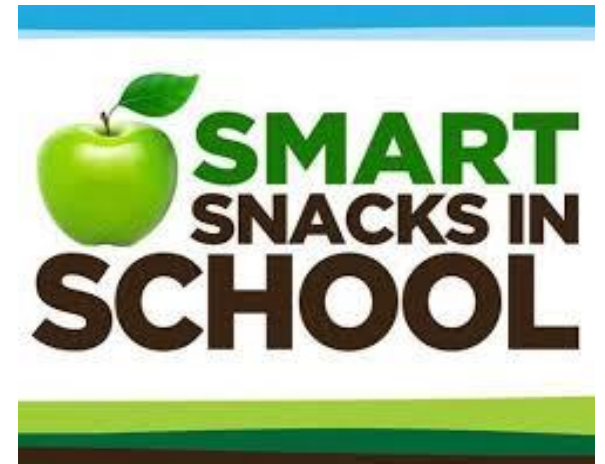
# **Upcoming Opportunities for State and Federal Law Improvements**



# Competitive Foods and Beverages

## On the Horizon

Explore changes to state Education Code  
and state regulations



<http://www.cde.ca.gov/ls/nu/he/compfoods.asp>



# Federal Opportunities: Reauthorization of Child Nutrition Act

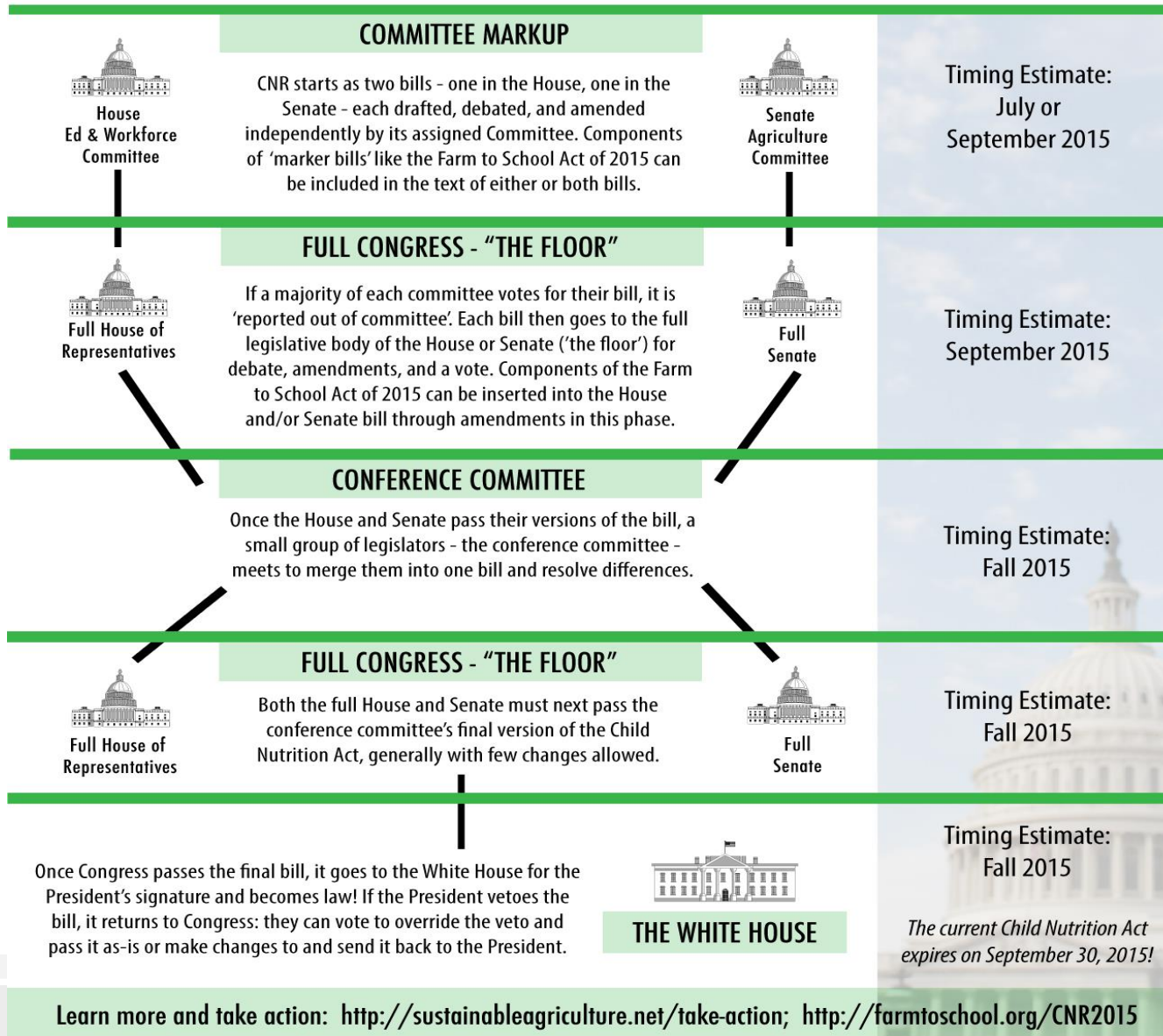
Congress reviews these programs every five years through the reauthorization process



# THE PATH TO A NEW CHILD NUTRITION ACT



Congress writes a new child nutrition bill about every 5 years; the process is known as "CNR" - Child Nutrition Act Reauthorization.  
Where is the bill now? And how does the Farm to School Act of 2015 fit in?



Learn more and take action: <http://sustainableagriculture.net/take-action>; <http://farmtoschool.org/CNR2015>



I think what we need to do is .....

We can't do that, but if you agree to .....



# Reauthorization provides an opportunity to improve and strengthen these programs



Chronicle / Craig Lee





We have the opportunity to consider  
the effect of the HHFKA



# CDE Recommendations for Reauthorization

Provide flexibility to serve  $\frac{1}{2}$  cup of fruit in the School Breakfast Program when implementing the Breakfast in the Classroom model



# CDE Recommendations for Reauthorization



Establish a minimum of 10 cents in USDA Foods entitlement for every breakfast served

# CDE Recommendations for Reauthorization



Allow 1 percent of funds from the nonprofit school food service account to be used for nutrition education projects



# CDE Recommendations for Reauthorization



Change the direct certification match benchmark to 90 percent



# CDE Recommendations for Reauthorization

Change the methodology for the community eligibility provision identified student percentage calculation





# CDE Recommendations for Reauthorization

Remove the requirement for visual identification of race and ethnicity on meal applications



# CDE Recommendations for Reauthorization



Clarify the definition of a food service management company



# *Questions?*





**This ends our Presentation.  
Thank you for all that you do,  
and for joining us today!**



**“The CDE is an equal opportunity provider and employer”**