

If You Are Not at the Table, Then You Are On the Menu:

Support Your Wellness Policy Through LCAP





If You Are Not at the Table, Then You Are on The Menu- *Support Your Wellness Policy Through LCAP*

- **Opening Remarks**
 - Shannan Young, Dairy Council of California
- **What You Need to Know about LCAP and LSWP**
 - Heather Reed, California Department of Education
- **Linking your LSWP to the LCAP**
 - Melissa Cannon, California Food Policy Advocates
- **The California LSWP Collaborative Resources**
 - Shannan Young, Dairy Council of California

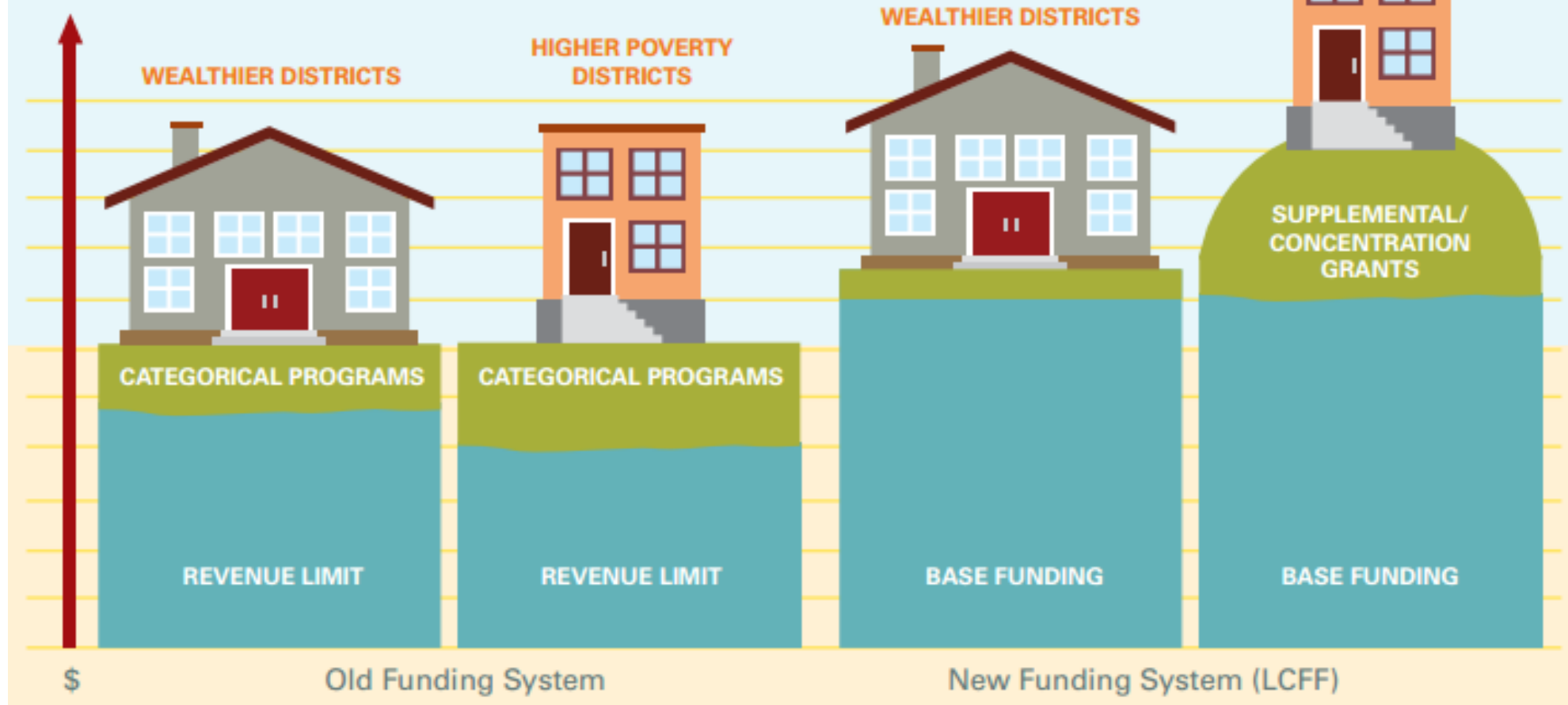


What You Need to Know about LCAP and LSWP



Heather Reed, MA, RDN
Nutrition Education Consultant
California Department of Education

California's School Finance System Before And After The Local Control Funding Formula (LCFF)



Local Control Funding Formula (LCFF)

- **Law increased budget for all schools**
 - Average daily attendance
 - Per student formula—with increases for high school students
- **Biggest increases for districts with the greatest needs**
 - Low-income (based on free and reduced eligibility for school meals)
 - Foster kids and English learners



HOW THE LOCAL CONTROL FUNDING FORMULA (LCFF) WORKS

- In 2013, California established the LCFF funding system



Every student generates a base grant, which funds basic educational costs, such as teacher salaries, retirement costs, instructional materials, etc.



Every student who **is low-income, learning English,** or in **foster care** generates 20% more funding above the base grant. These funds must be spent on increasing and improving services for these high-need student groups in order to improve their achievement.



In districts where at least 55% of students are high-need, those high-need students above the 55% enrollment threshold generate an extra 50% of the base grant. These funds must also be spent to increase or improve services for high-need students in order to improve their achievement.

THE TIMEFRAME TO DEVELOP THE LCAP



Late Summer-Fall

District engages the community to solicit input on the LCAP. District and community assess student needs.

Suggested



Winter

District creates first draft of plan, incorporating community input.

Suggested



Spring

District presents proposed plan to parent advisory committees for feedback and input.

Suggested



Spring

District responds in writing to feedback from parent advisory committees and incorporates feedback into plan.

Suggested



July 1, following year

School board adopts plan by July 1st in a public hearing.

Required by Statute



October 8, following year

County office of education must approve district LCAPs by October 8th.

Required by Statute



About the LCAP

The LCAP is a three year plan, annually updated in July

It has three sections:

- (1) Stakeholder Engagement
- (2) Goals and Progress Indicators
- (3) Actions, Services, and Expenditures
based on the LCFF



8 priority areas

Stakeholder Engagement

- Local Education Agencies must *consult* with stakeholders, rather than just engage with them
- **Stakeholders that must be consulted are:**
 - School personnel
 - Local bargaining units
 - Parents
 - Pupils
 - Community





LCAP Template

GOAL:				Related State and/or Local Priorities:											
				1__ 2__ 3__ 4__ 5__ 6__ 7__ 8__											
				COE only: 9__ 10__											
				Local : Specify _____											
Identified Need :															
Goal Applies to:				Schools:											
				Applicable Pupil Subgroups:											
LCAP Year 1: xxxx -xx															
Expected Annual Measurable Outcomes:															
				Scope of Service		Pupils to be served within identified scope of service						Budgeted Expenditures			
						__ALL OR: __Low Income pupils __English Learners __Foster Youth __Redesignated fluent English proficient __Other Subgroups:(Specify)_____									



Eight State Priority Areas

Basic Services

Implementation
of Standards

Parent
Engagement

Student
Achievement

Student
Engagement

School
Climate

Access to
Courses

Other student
outcomes



LCAP and Local School Wellness Policy are Connected!

- **LSWP Final Rule-** strategic moment to update your LSWP and set the stage for inclusion into LCAP
 - opportunity to ensure that students have nutrition and health services included in planning
- **When schools focus on student health, students succeed!**
- **AND when student health is measured, LCAP succeeds!**



Local School Wellness Policies (LSWP) Final Rule: 2016

Implementation Required by June 30, 2017

- Specific, measurable goals for student wellness
- Nutrition standards for all foods on campus
- Food and beverage marketing
- Annual notification & triennial assessments
- LEA oversight

Final Rule LSWP Requirements

- **Goals for Student Wellness**
 - Nutrition Education and Promotion
 - Physical Activity; Other Student Wellness
- **Nutrition Guidelines**
 - School Meals
 - Smart Snacks (competitive foods and beverages)
- **Stakeholder Engagement**
- **Public Notification**
- **Assessment and Implementation**
- **Evaluation and Operational Oversight**





Let's Consider Wellness and LCAP priorities



Upgrade School Kitchens and School Meals

Basic Services

Implementation
of Standards

Parent
Engagement

Student
Achievement

Student
Engagement

School
Climate

Access to
Courses

Other student
outcomes

- Which LCAP priorities would align?



Upgrade School Kitchens and School Meals

Basic Services

Implementation
of Standards

Parent
Engagement

Student
Achievement

Student
Engagement

School
Climate

Access to
Courses

Other student
outcomes

Students depend on school meals

- Expand kitchen space and equipment
- Adequate eating areas
- Hydration (water) stations
- Marketing meals; meal supplements



Support Nutrition Education

Basic Services

Implementation
of Standards

Parent
Engagement

Student
Achievement

Student
Engagement

School
Climate

Access to
Courses

Other student
outcomes

- Which LCAP priorities would align?



Support Nutrition Education

Basic Services

Implementation
of Standards

Parent
Engagement

Student
Achievement

Student
Engagement

School Climate

Access to
Courses

Other student
outcomes

Students learn skills for life!

- **Nutrition curricula**
- **Experiential learning**
 - Gardening, cooking, tastings



Solicit Parent and Youth Feedback

Basic Services

Implementation
of Standards

Parent
Engagement

Student
Achievement

Student
Engagement

School Climate

Access to
Courses

Other student
outcomes

- Which LCAP priorities would align?



Solicit Parent and Youth Feedback

Basic Services

Implementation
of Standards

Parent
Engagement

Student
Achievement

Student
Engagement

School Climate

Access to
Courses

Other student
outcomes

**Programs work better when
parents and students have a voice**

- Wellness committees
- Student nutrition advisory councils
- Recipe tastings





Nutrition Investments in LCAP

Commitment

Staffing

Funding





A Few Examples

- Placentia Yorba Linda USD
 - **Marketing of meals**
- Novato USD
 - **Supplement for reduced price meals**
- Compton USD
 - **Professional development for cafeteria staff**
- Lawndale USD
 - **Stipend for wellness coordinator at each site**
- Pittsburg USD
 - **Garden coordinator for nutrition education**
- Oakland
 - **Harvest of the Month education**



LCAP Resources

Sample advocacy toolkit the Arts and Education LCFF toolkit Web page
at <http://www.artsforla.org/artseducationLCAP>

View Frequently Asked Questions

- on the CDE LCFF Web page at

<http://www.cde.ca.gov/fg/aa/lc/lcffoverview.asp>

E-mail LCFF questions to LCFF@cde.ca.gov

LCAP Watch Web site at <http://lcapwatch.org>

WestEd LCFF Web page at <http://lcff.wested.org/lcff-channel>



For more information, please contact
Heather Reed, California Department of
Education at hreed@cde.ca.gov



This institution is an equal
opportunity provider.



Linking your LSWP to the LCAP



Melissa Cannon, RD, CDE®
Nutrition Policy Advocate
California Food Policy Advocates



Understanding the LCAP

and Linking it to Your LSWP Action



STATE PRIORITY AREAS

Each school district is required to address eight separate priority areas within their Local Control and Accountability Plan.

Basic Services

Implementation
of Standards

Parent
Engagement

Student
Achievement

Student
Engagement

School Climate

Access to
Courses

Other student
outcomes

STATE PRIORITY AREAS

Student Achievement

District Goal		Outcomes		Actions		Metrics



State Priority Areas

Student Achievement

DISTRICT GOAL		Outcomes		Actions		Metrics
The overarching goal of the district to achieve academic success.						



State Priority Areas

Student Achievement

DISTRICT GOAL		Outcomes		Actions		Metrics
Closing the achievement gap with high expectations for all.						



State Priority Areas

Student Achievement

District Goal		OUTCOMES		Actions	Metrics
Closing the achievement gap with high expectations for all.		Outcomes are state required metrics that provide a means of measuring success.			

State Priority Areas

Student Achievement

District Goal		OUTCOMES		Actions	
Closing the achievement gap with high expectations for all.		<ul style="list-style-type: none">• EL reclassification rates• ELs Achieving Proficiency in English• Performance on standardized tests• Academic Performance Index			



State Priority Areas						
Student Achievement						
District Goal		Outcomes		ACTIONS		Metrics
Closing the achievement gap with high expectations for all.		<ul style="list-style-type: none">• EL reclassification rates• ELs Achieving Proficiency in English• Performance on standardized tests• Academic Performance Index		Actions are the evidence-based actions school districts can take to meet state required metrics and achieve their district goal.		

State Priority Areas

Student Achievement

State Priority Areas					
Student Achievement					
District Goal		Outcomes		ACTIONS	
Closing the achievement gap with high expectations for all.		<ul style="list-style-type: none">• EL reclassification rates• ELs Achieving Proficiency in English• High school graduation rates• Dropout rates• Academic Performance Index		How can nutrition related actions help advance this district goal of closing the achievement gap?	

State Priority Areas

Student Achievement

District Goal		Outcomes		Actions	METRICS
Closing the achievement gap with high expectations for all.		<ul style="list-style-type: none">• EL reclassification rates• ELs Achieving Proficiency in English• High school graduation rates• Dropout rates• Academic Performance Index			Metrics are measures of progress towards achieving each action.

State Priority Areas

Student Achievement

District Goal		Outcomes		Actions	METRICS
Closing the achievement gap with high expectations for all.		<ul style="list-style-type: none">• EL reclassification rates• ELs Achieving Proficiency in English• High school graduation rates• Dropout rates• Academic Performance Index			How can you measure progress on achieving your nutrition related action?

Example #1

District Goal	Outcomes	Actions	Metrics
Actively engage parents and students to promote school attendance, a positive school climate, and increase involvement in the school community	Attendance rate improved. Graduation rate improved. Suspension and dropout rates improved. Feeling of safety and school connectedness improved. Increased parental involvement.	What nutrition actions could support this goal?	How would you measure success?

Example #2

District Goal	Outcomes	Actions	Metrics
All families are valued as partners in their child's education and included in the learning process to empower them to support their child's preparation for current and future success.	Input from parent surveys. Parent decision making councils/committees to seek parent input in decision making. Parental participation in programs for unduplicated students.	What nutrition actions could support this goal?	How would you measure success?

Example #3

District Goal	Outcomes	Actions	Metrics
Establish Conditions of Learning to implement CCSS, maintain facilities, train and retain staff, and offer broad course access.	All students will have sufficient instructional materials. All of our math and English teachers have an opportunity to participate in professional development in Common Core State Standards	What nutrition actions could support this goal?	How would you measure success?



Next steps...

- **Familiarize yourself with your district's LCAP**
- **Make Your Case**
 - How does your action support high needs students.
 - What state required priority areas and metrics/outcomes will your action support?
 - What does the research say? How does this connect to LCAP requirements?
- **Build Your Support Base**
 - Utilize your LSWP council
 - Mobilize students
 - Gain parental buy-in
- **Present to LCAP decision makers**

State Priority Areas

Example #1

District Goal	Outcomes	Actions	Metrics
		<p>Where do actions to support adequate time to eat fit in?</p> <p>What does the research say?</p> <p>How would you make your case?</p> <p>Who would be your support base? The LCAP decision makers</p>	

State Priority Areas

Example #2

District Goal	Outcomes	Actions	Metrics
		<p>Where do actions to support breakfast after the bell fit in?</p> <p>What does the research say?</p> <p>How would you make your case?</p> <p>Who would be your support base? The LCAP decision makers</p>	

State Priority Areas

Example #3

District Goal	Outcomes	Actions	Metrics
		<p>Where do efforts to support recess before lunch fit in?</p> <p>What does the research say?</p> <p>How would you make your case?</p> <p>Who would be your support base? The LCAP decision makers</p>	

State Priority Areas

Example #4

District Goal	Outcomes	Actions	Metrics
		<p>Where do efforts to support maintenance and facilities improvement of school cafeterias fit in?</p> <p>What does the research say?</p> <p>How would you make your case?</p> <p>Who would be your support base? The LCAP decision makers</p>	

State Priority Areas

Example #5

District Goal	Outcomes	Actions	Metrics
		<p>Where do efforts to support participation on the school wellness policy fit in?</p> <p>What does the research say?</p> <p>How would you make your case?</p> <p>Who would be your support base? The LCAP decision makers</p>	

The California Local School Wellness Policy Collaborative



Vision:

“inspire school communities to take their wellness policies from paper to practice”



Shannan D. Young, RDN, SNS,
Food Systems Program Manager
Dairy Council of California
syoung@dairycouncilofca.org



California Local School Wellness Policy Collaborative

The California Local School Wellness Policy (LSWP) Collaborative brings together state leaders committed to improving student wellness and academic success. By leveraging their collective resources, the collaborative members are building a statewide infrastructure that supports schools in updating and implementing their Local School Wellness Policies.

Vision:

We inspire school communities to take their wellness policies from paper to practice.

Mission:

We are a catalyst for school communities and stakeholders to implement highly effective local school wellness policies in California schools to support student health and academic achievement.

Collaborative Goals:

Build broad support

for local school wellness policy implementation, among schools, after school programs, health departments, elected officials and community stakeholders; and

Assist districts

in revising their policies to meet Child Nutrition Reauthorization Act/Healthy Hunger Free Kids Act of 2010 requirements and strengthening their skills and commitment to implement local priorities and monitor adopted local school wellness policies.

For more information about the California Local School Wellness (LSWP) Collaborative and to access resources, please visit our web page at:

www.healthyeating.org/schoolwellness



Partner Organizations

Alliance for a Healthier Generation

American Cancer Society - Cancer Action Network

Association of California School Administrators

California Action for Healthy Kids

California Association for Health, Physical Education, Recreation and Dance

California Department of Education -- Nutrition Services, Team California for Healthy Kids

California Department of Public Health -- Network for a Healthy California

CDE Foundation

California Fuel Up to Play 60

California Project LEAN

California School Boards Association

California School Nurses Organization

California School Nutrition Organization

California State Parent Teacher Association

California Teachers Association

Center for Collaborative Solutions

Dairy Council of California

Los Angeles Unified School District

Public Health Institute

UC CalFresh Nutrition Education Program

Local School Wellness Collaborative Survey

*An Assessment of Local School Wellness Policy Implementation and Practice
in California Public Elementary, Middle, and High Schools*



Key Findings Summary
August 2015



Association of California School Administrator Respondents



Approximately half
of respondents
reported having a
fully active wellness
committee.



Nearly half of all respondents reported
having active school gardens.

Mental Health
was listed as the
top priority for
school health
and wellness.

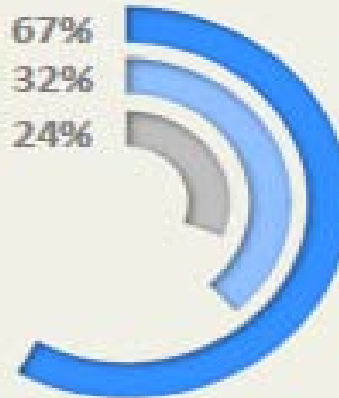
Mental Health

Nutrition

Bullying

PE/PA

Interest 67%
w/ Funding 32%
w/o Funding 24%



67% reported
interest in
including
wellness in
LCAP; 32% did
so with
funding and
24% without
funding.

www.healthyeating.org/schoolwellness



Login

Order

Search...



Healthy Eating ▾

Healthy Kids ▾

Milk + Dairy ▾

Schools ▾

Health + Wellness Providers ▾

About Us ▾

Blog

Schools ▸ School Wellness ▸ California Collaborative

California Local School Wellness Policy Collaborative

The California Local School Wellness Policy Collaborative brings together state leaders committed to improving student wellness and academic success.

Vision:

We inspire school communities to take their wellness policies from paper to practice.

Mission:

We are a catalyst for school communities and stakeholders to implement highly effective Local School Wellness Policies in California schools to support student health and academic achievement.

Collaborative Goals:

To build broad support for local school wellness policy implementation among schools, after school programs, health departments, elected officials and community stakeholders.

Assist districts in revising their policies to meet Child Nutrition Reauthorization Act/ Healthy Hunger Free Kids Act of 2010 requirements and strengthening their skills and commitment to implement local priorities and monitor adopted local school wellness policies.



Sign up to receive our newsletter

Sign up for
newsletter





Quarterly Newsletter

<http://www.healthyeating.org/Schools/LSWP-Subscribe.aspx>



California Local School Wellness Policy Collaborative is comprised of over 20 organizations committed to supporting schools in creating and implementing strong wellness policies. We hope these resources provide you with the information you need to activate your district's policy. Our [last newsletter](#) featured the success of Torrance Unified School District Nutrition Services, and in this issue, we recognize star principals across the state and learn how they are putting policy into action.

Principals Committed to Improving School Wellness

Cypress School District in Cypress, Calif., has a policy that states, "Vigorous physical activity shall be provided on a regular basis through physical education, recess, school athletic programs, extracurricular programs and other structured and unstructured activities."

But how did this principal put the policy into action? Read her full story [here](#).

Principal Patrick Ham was looking for a fun way to encourage healthy behaviors at his school, too. He considered launching a [Wellness Wednesday Program](#), and with the support of the district's director of food services and Dairy Council of California, such a program was successfully implemented.



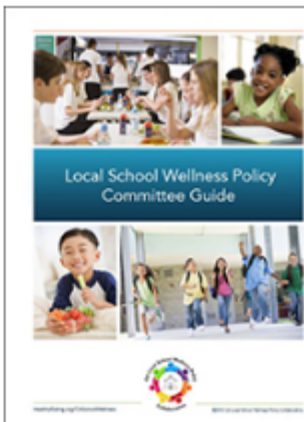
Learning Events

The archived webinar [Getting Your Wellness Policy Ahead of the Curve](#) is now available.

Resources on website

Leadership Committee Guide

Is your district on track to meeting USDA's Local School Wellness Policy requirements? This [Local School Wellness Policy Leadership Committee Guide](#) provides suggested steps, timelines, and resources so you can establish and maintain a successful wellness team.



Resources to Strengthen + Expand Your Wellness Policy



Create a Culture of Wellness



Raising a Generation of Healthier



Take Wellness Policies from Paper



Sign Up for the Collaborative



Local School Wellness Policy



Launch a Weekly Wellness Program



CA LSWP Webinars and Trainings

- **LSWP Webinars (archived) at:**

- <http://www.cdph.ca.gov/programs/NEOPB/Pages/NEOPBFFY2016TrainingArchive.aspx>

- **LSWP Basics: What you need to know to put your wellness policy in place**

- July 20, 2016 from 10:00 a.m. to 11:15 a.m.

- **Getting your school wellness policy committee engaged and moving forward**

- August 24, 2016 from 1:30 p.m. to 2:45 p.m.

- **Resources for assessing the quality of school health policies and practices and improvement plan implementation (assessment using School Health Index)**

- September 22, 2016 from 10:00 a.m. to 11:15 a.m.

- **LSWP Workshops: Refreshing Your LSWP**—Spring 2017—to include Final Rule and LCAP

Want to see what more wellness policies?



Login  Order 

Healthy Eating ▾

Healthy Kids ▾

Milk + Dairy ▾

Schools ▾

Health + Wellness Providers ▾

[Schools](#) » [School Wellness](#) » [School Wellness Policies](#)

School Wellness Policies

Local school wellness policies are an important tool in promoting student wellness, preventing and reducing childhood obesity, and providing assurance that school meal nutrition guidelines meet the minimum federal school meal standards. A unified group of stakeholders such as parents, health agencies, community partners, local educational agencies, and school districts can have synergistic effects on the health behaviors and academic success of students.

Search for your Local School Wellness Policy

Select Region:

If your school policy is not included or has been updated, please email a copy to info@dairycouncilofca.org.





Questions?



This institution is an equal opportunity provider.